

PROYECCIONES DE POBLACION RMRP 2022

10 October 2021

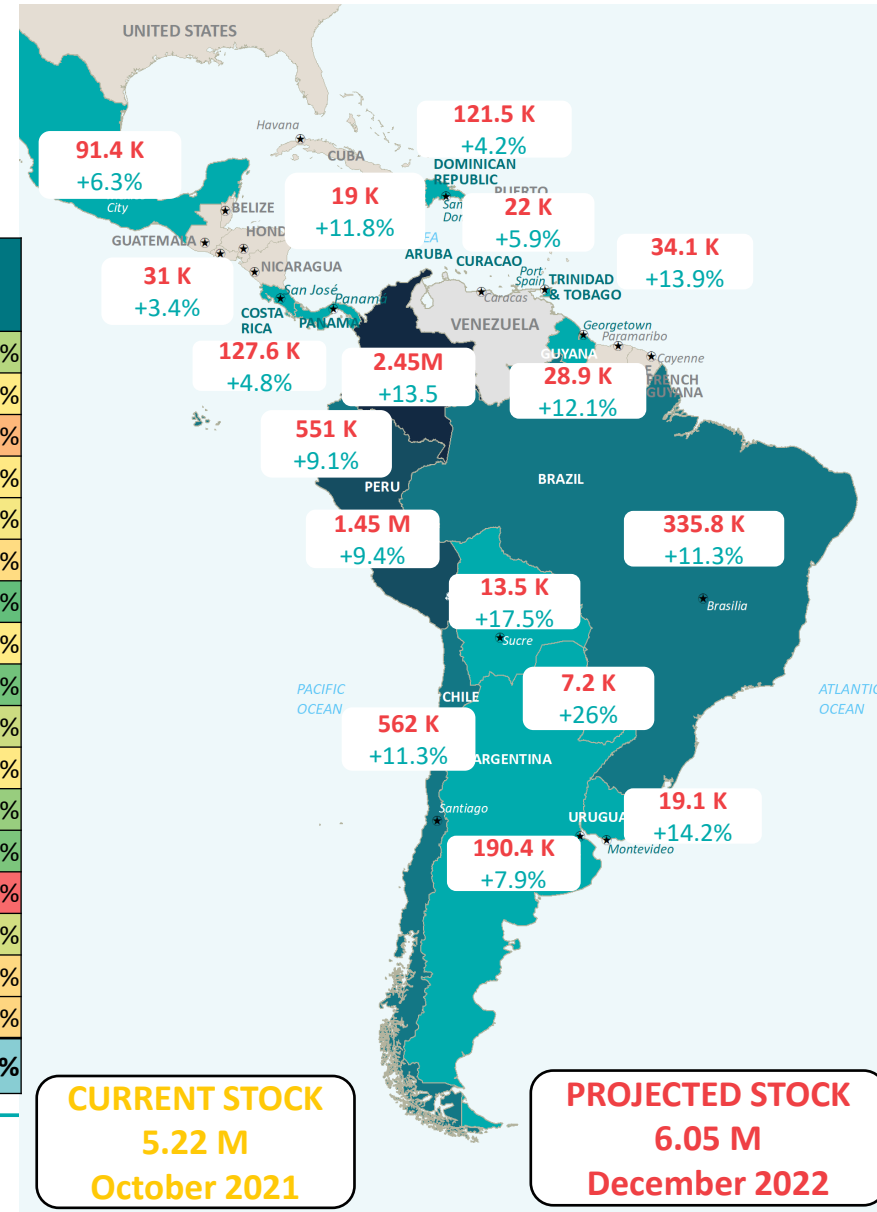
Proyecciones de Población 2022

Dec 2022
6.05M
+ 602 k in 2022

1.649
R/M daily

50.159
R/M monthly

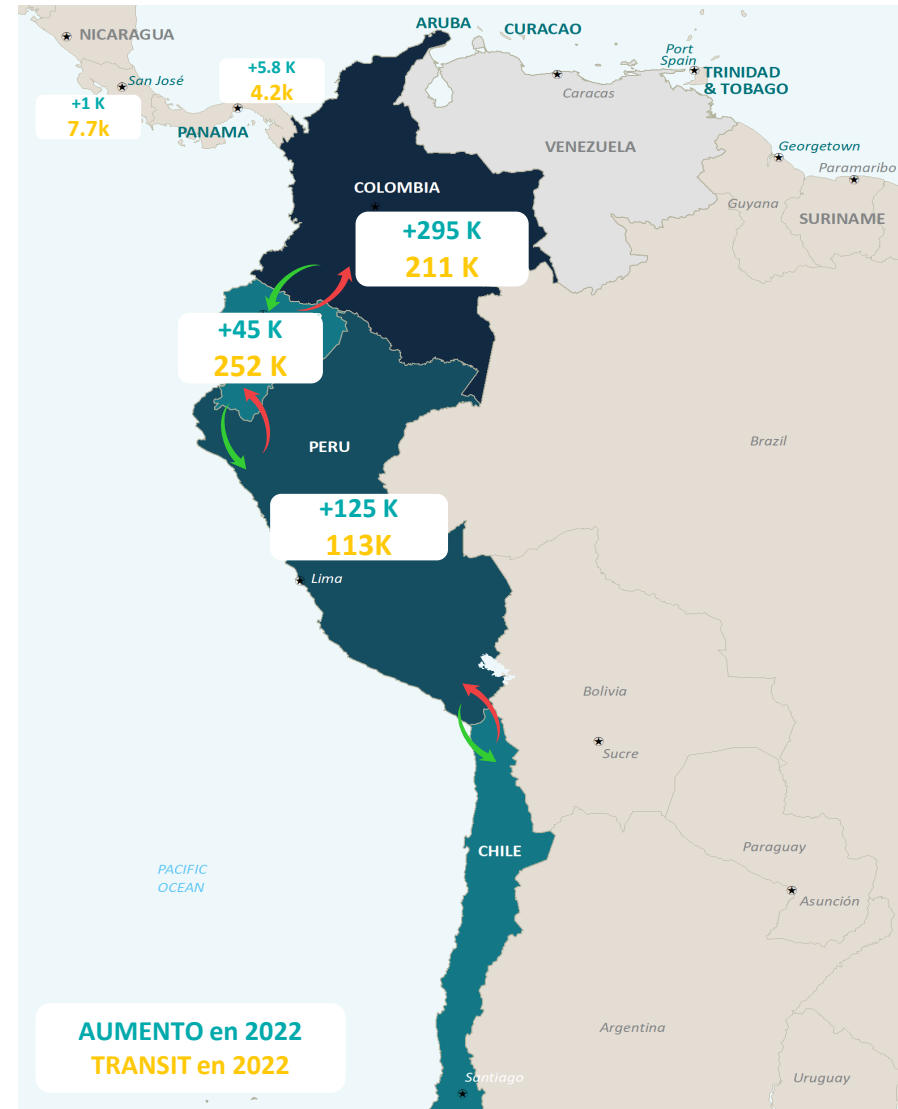
Platform	Current (R&M October)	Dec 2021	Dec 2022	Increase in 2022	
Argentina	173.248	176.452	190.392	13.940	7,9%
Aruba	17.000	17.000	19.000	2.000	11,8%
Bolivia	10.966	11.479	13.492	2.013	17,5%
Brazil	261.441	299.781	335.781	36.000	12,0%
Chile	448.138	505.007	561.876	56.869	11,3%
Colombia	2.099.357	2.155.567	2.445.689	290.122	13,5%
Costa Rica	29.906	30.026	31.056	1.030	3,4%
Curacao	17.000	17.000	19.000	2.000	11,8%
Dominican Republic	115.283	116.516	121.472	4.956	4,3%
Ecuador	482.897	505.183	550.940	45.757	9,1%
Guyana	24.540	25.800	28.920	3.120	12,1%
Mexico	82.976	85.976	91.393	5.417	6,3%
Panama	121.598	121.832	127.640	5.808	4,8%
Paraguay	5.051	5.739	7.231	1.492	26,0%
Peru	1.286.464	1.327.846	1.452.676	124.830	9,4%
Trinidad & Tobago	28.478	29.947	34.111	4.164	13,9%
Uruguay	15.247	16.773	19.163	2.390	14,2%
Total	5.219.590	5.447.924	6.049.831	601.908	11,0%



Augmento y en Transito en 2022

SEP 2021 -> DIC 2021 -> DIC 2022

Platform	Dec 2022
Colombia	211.364
Ecuador	252.111
Peru	113.150
Bolivia	8.769
Panama	4.200
Costa Rica	7.659
Mexico	3.000
Total in-transit	600.253



PiN 2022

Platform	PiN Total	In-Dest PiN	In-Transit PiN	PiN HC	PiN Pendular	PiN Returnees
Argentina	209.536	136.771		72.765		
Aruba	21.200	15.200		6.000		
Bolivia	33.174	9.823	6.385	16.966		
Brazil	312.010	285.414		26.596		
Chile	481.327	358.084		123.243		
Colombia	4.831.479	2.010.206	179.186	876.301	1.120.551	645.235
Costa Rica	25.093	18.635	4.595	1.863		
Curacao	19.096	13.870		5.226		
Dominican Republic	99.100	90.091		9.009		
Ecuador	872.861	451.721	196.518	224.622		
Guyana	29.456	23.564		5.892		
Mexico*						
Panama	93.625	76.584	2.520	14.521		
Paraguay	10.983	6.489		4.494		
Peru	1.602.101	918.190	66.224	617.687		
Trinidad and Tobago	35.305	30.700		4.605		
Uruguay	15.141	10.732		4.409		
Grand Total	8.691.487	4.456.074	455.428	2.014.199	1.120.551	645.235
% of PiN Total	100%	51,3%	5,2%	23,2%	12,9%	7,4%

* Missing Mexico

PiN In-destination
4.46M
(74% of Pop projection)

Pop Proj
6.05M
in 2022

PiN 2022 as a % of the Projections

Platform	In Dest PiN	In Transit PiN
Argentina	71,8%	
Aruba	80,0%	
Bolivia	72,8%	72,8%
Brazil	85,0%	
Chile	63,7%	
Colombia	82,2%	84,8%
Costa Rica	60,0%	60,0%
Curacao	73,0%	
Dominican Republic	74,2%	
Ecuador	82,0%	77,9%
Guyana	81,5%	
Panama	60,0%	60,0%
Paraguay	89,7%	
Peru	63,2%	58,5%
Trinidad & Tobago	90,0%	
Uruguay	56,0%	
Total	73,7%	75,9%