

SITUATION REPORT – APRIL 2024

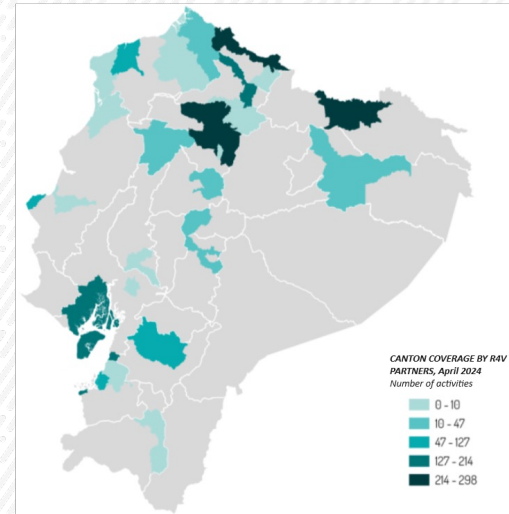
ECUADOR

474.945

VENEZUELAN REFUGEES AND MIGRANTS IN ECUADOR *

COUNTRY OVERVIEW

The **regularization process in Ecuador** reached a crucial phase on April 5, which was the deadline for applying for a VIRTE visa. A total of 248.4K people registered for an appointment, 201.7K received a certificate of temporary permanence, 95.7K VIRTE visas were granted and 72.3K identity cards were delivered. For all those who applied prior to April 5, applications are expected to continue to be processed normally. The **Border Monitoring and Profiling System** of the GTRM estimated irregular entries and exits to be almost on par for the month of April. Continuing the trend observed in recent past months, most estimated irregular exits occurred through Ecuador's northern border, while monthly departures to the south were lower than in the same period of 2023. Venezuelan refugees and migrants expressed concerns due to the Government of Venezuela's announcement that it would close its Embassy in Quito and consulates in Quito and Guayaquil (in the context of **diplomatic tensions** between the Governments of Ecuador and Mexico) leading GTRM partners to anticipate difficulties for the Venezuelan population in Ecuador to obtain and renovate various documents. Meanwhile, on April 1, the **Value Added Tax (VAT)** increased from 12% to 15%, raising the costs of goods and services for refugees, migrants and host community members alike. Finally, a **Consulta Popular** took place on April 21, posing 11 questions mainly related to security issues. Preliminary results indicated that the "yes" won on the nine questions related to security, while the "no" won on two questions related to international arbitration and hourly labor contracts.



PEOPLE REACHED **

39.1 K In Destination
20.0 K In Transit

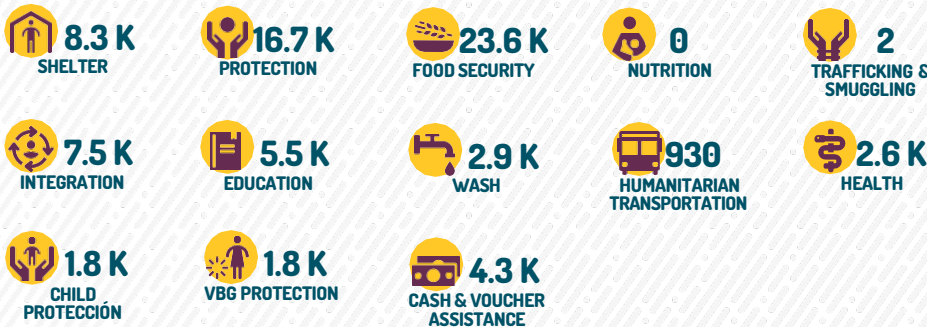
People reached in April 2024

17.0 K

AGE AND GENDER



PEOPLE REACHED BY SECTOR**



STATE SUPPORT ***

Public sector officers trained **3.3K**
Public institutions strengthened **20**

COMMUNITY SUPPORT***

Host community reached **14.9K**
Civil society trained **4.6 K**

CVA ACTIVITIES 33.9%

FUNDING

Required: **\$288.7M**

Received: **\$1.2M**

0.4%

UN OCHA - (FTS) Financial Tracking Service may take several months to update information. RMRP funding may be higher.

RESPONSE HIGHLIGHTS

In April, GTRM **partners reached 17K refugees, migrants and host community members** with assistance. The response included assistance provided in 28 counties nationwide with the participation of 38 partner organizations. **Protection** (including general protection, child protection, prevention of gender-based violence and human trafficking and migrant smuggling) and **food security** were the top two sectors in delivering assistance, with more than 14.5K and 14.4K people reached, respectively. In addition, assistance provided through the WAN multi-sector (including WASH, shelter and humanitarian transportation) increased compared to previous months, with more temporary shelter provided at borders and rental support for people in destination. In the **Education** sector, linked to the start of the school year in the coastal provinces, interventions were strengthened to increase access to formal education for children and adolescents, in addition to activities for education inclusion with the Education Ministry. On April 15, a virtual session was held to present the results of the GTRM [Border Monitoring and Profiling System Analysis for 2023](#). The system gathers information and estimates irregular movements of refugees and migrants from Venezuela entering and leaving Ecuador. The report seeks to provide a comprehensive and comparative analysis of the complex dynamics of mixed movements of refugees and migrants during 2023.

PARTNERS RMRP 2024 - ECUADOR

ACIMPOVEN • ACNUDH • ACNUR • ADRA • Aldeas Infantiles SOS • ASA • ASOVEN • AVOE • AVSI • Ayuda en Acción • Banco Mundial • CARE • Caritas Ecuador • CDH • ChildFund Internacional • CISP • COOPI • CORPOAMBATO • Cruz Roja Ecuador • CUSO International • D&A • Danielle's Childrens Fund • Diálogo Diverso • EVAM • F. Alas de Colibri • F. CRISFE • F. ESQUEL • F. Lunita Lunera • F. Mueve • F. Mujer y Mujer • F. QUIMERA • F. TAKUNA • F. TARABITA • F. TERRA- NUEVA • FIDAL • FUDELA • FUNDER • FUPAD • GIZ • Haciendo Panas • HIAS • Humanity & Inclusion • IMMAP • IMPACT • IPANC • IRC • KIMIRINA • LAB XX1 • Lluvia Arcoíris • Manos Venezolanas • Mision Scalabriniana • NRC • OIM • OIT • ONU-Mujeres • OPS/OMS • Plan Internacional • PLAPERTS • PMA • PNUD • Reinas Pepiadas • RET Internacional • SJR • UN Habitat • UNESCO • UNFPA • UNICEF • UNODC • VEAC • WOCCU • World Vision

* The figure includes the cumulative official migratory balance of inflows and outflows of Venezuelan refugees and migrants, as well as an estimate of irregular migratory balance through the use of the Monitoring and Profiling System of the GTRM. ** Cumulative number of people reached since January 2024. Only direct and new beneficiaries are included. The figure does not include host community. ***Cumulative assistance for institutional strengthening and civil society since January 2024.