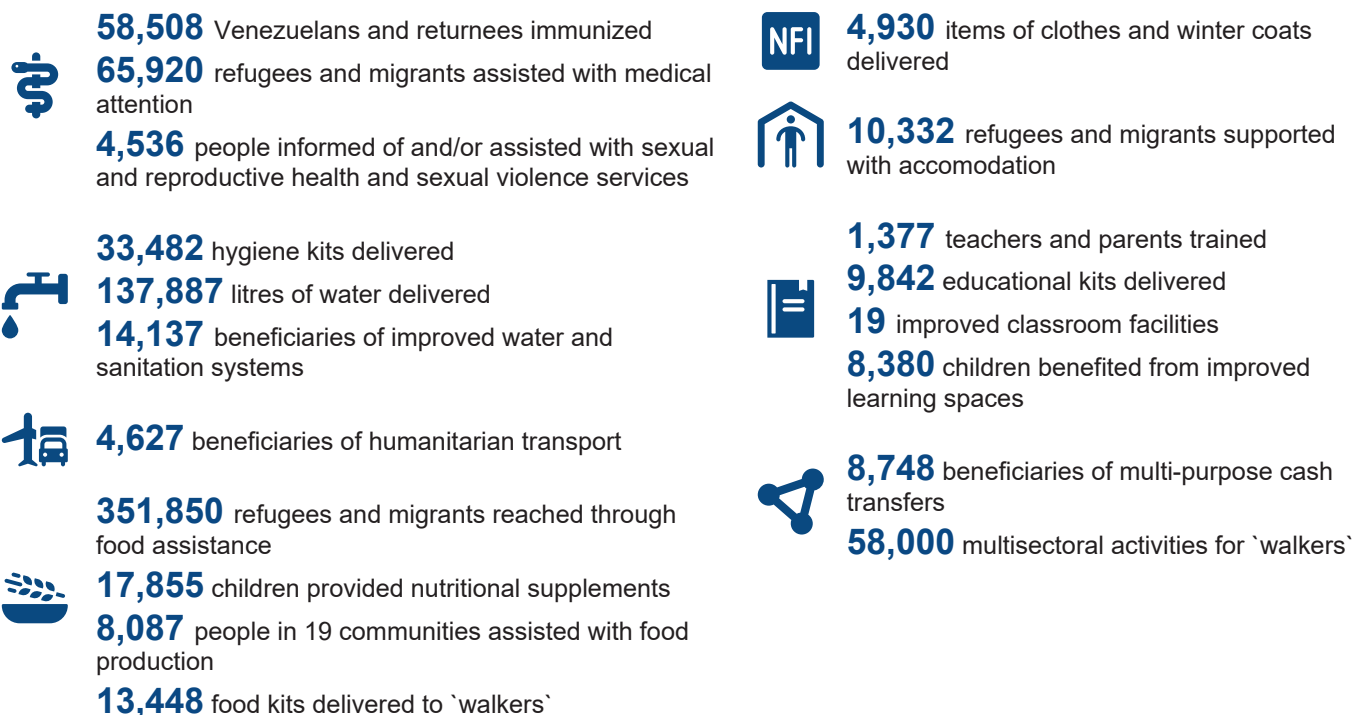


# KEY RESULTS 2018

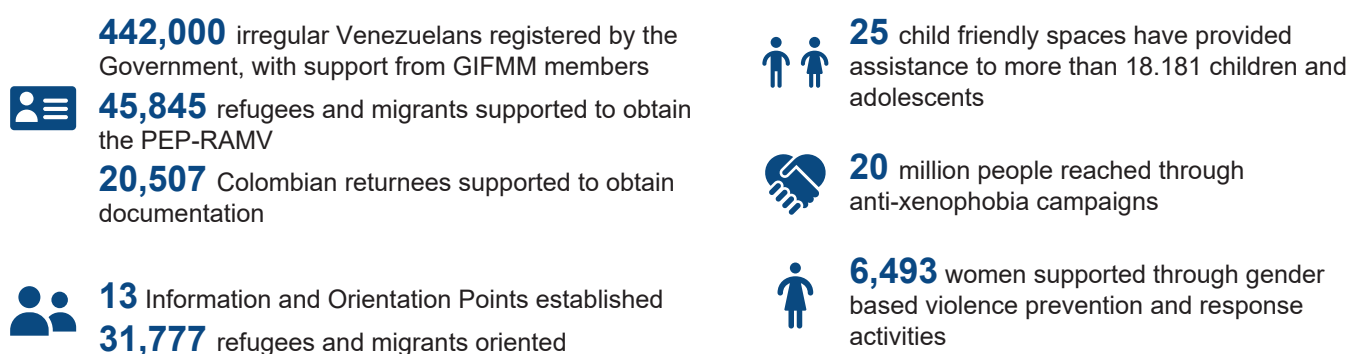
(January - December 2018)

The Interagency Group on Mixed Migratory Flows (GIFMM) coordinates the strategic and operational response to the arrival of refugees and migrants in Colombia and to the needs of the host communities. It currently has 46 members at the national and local levels including United Nations agencies, NGOs and the Red Cross Movement. The GIFMM is the national expression of the Regional Platform established by the UNHCR and the IOM following the decision of the Secretary General, and coordinates the Colombian chapter of the 2019 Regional Plan for the Response to Refugees and Migrants (RMRP).

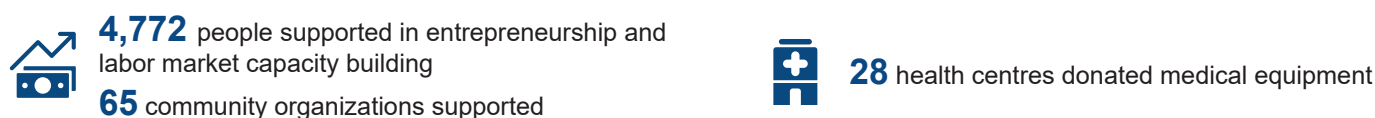
## Area of intervention 1: Direct emergency assistance



## Area of intervention 2: Protection response

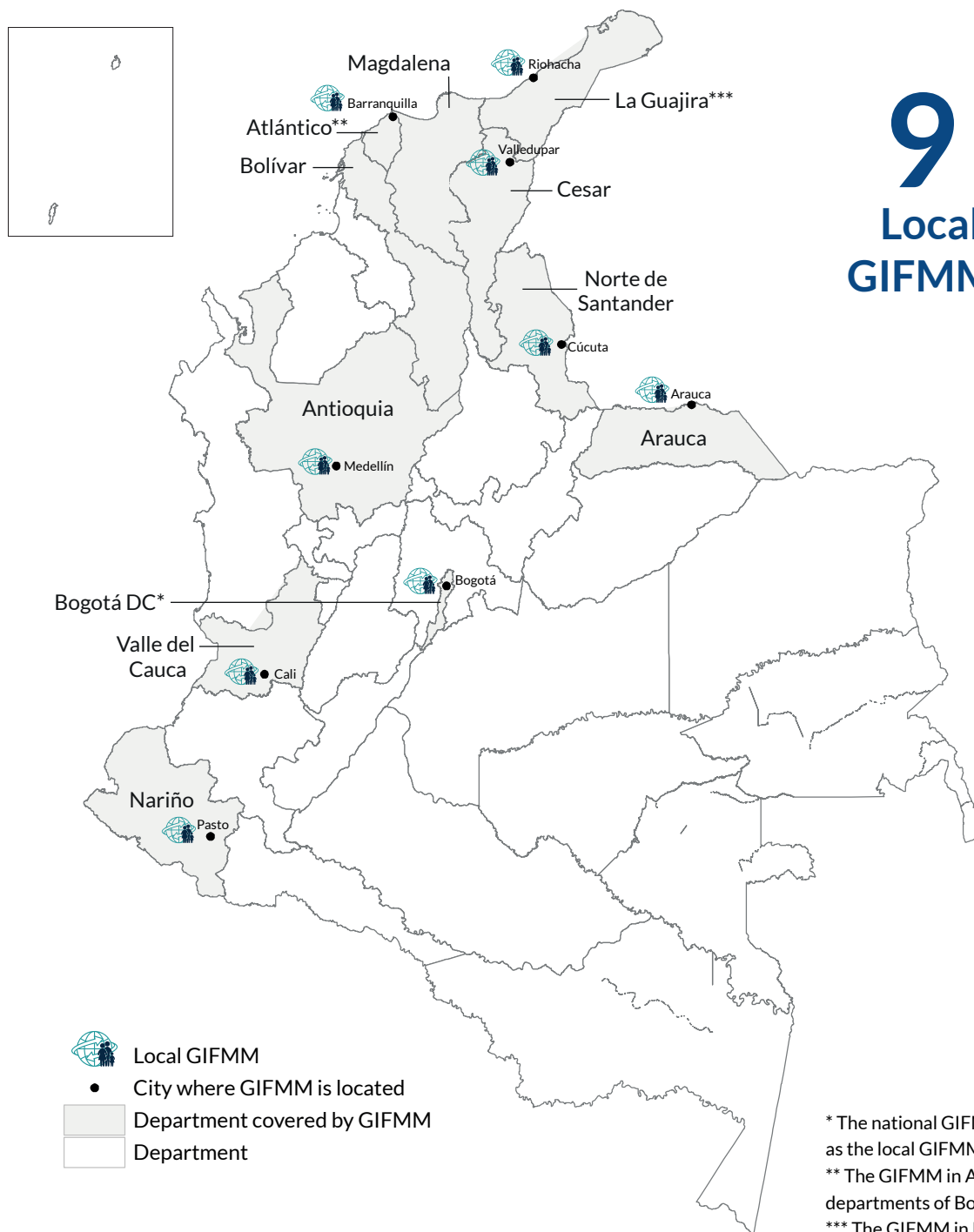


## Area of intervention 3: Socio-economic and cultural inclusion



## Area of intervention 4: Strengthening capacity of host government





\* The national GIFMM is located in Bogotá as well as the local GIFMM that covers Bogotá DC  
 \*\* The GIFMM in Atlántico also covers the departments of Bolívar and Magdalena  
 \*\*\* The GIFMM in La Guajira also covers the department of Cesar

## Local and national members\*

ACF | ADRA | American Red Cross | Americares | Ayuda en Acción | BLUMONT | Caritas Germany | Caritas Switzerland | Colombian Red Cross | CORPOSCAL | Diakonie | DRC | FAO | Fundación PLAN | Halü | Humanity & Inclusion | ICRC | IFRC | ILO | iMMAP | IOM | IRC | JRS Colombia | JRS Latin America and the Caribbean | Lutheran World Federation | Malteser International | Mercy Corps | Norwegian Red Cross | NRC | OACNUDH | OCHA | OCR | OXFAM | PADF | Pastoral Social | Plan International | RET International | Samaritan's Purse | Save the Children | Spanish Red Cross | TdH Lausanne | UN Habitat | Un Techo Para Mi País | UN Women | UNDP | UNEP | UNFPA | UNHCR | UNICEF | War Child | WFP | WHO/PAHO | World Vision

## Donors

Aktion Deutschland Hilft | AECID | Germany | Brazil | Canada | Caritas | CERF | Colgate | COSUDE | Denmark | Diócesis de Riohacha | Donantes privados | Dubai Cares | ECHO | Spain | The United States of America | FFP | France | Fundación Cadena | Ford Foundation | GIZ | Irish Aid | Italy | Japan | Latter-day Saints Charities | Norway | New Zealand | OFDA | The Netherlands | PRM | United Kingdom | SFERA | Switzerland | Sweden | European Union | UPS | USAID